



Southland Centre for CONDUCTIVE EDUCATION



Gladstone Scout Hall, cnr Holywood Terrace & Russel Street - P O Box 126 - Invercargill - Phone 03 931 0111

Kevin's Christmas Message

Here we are with another year gone! Believe me as we get older the years seem to pass by a lot quicker.

It truly has been a remarkable year at Conductive Education Southland. Not only has our roll increased, but we have also taken on an adult needing our conductive programmes. We are the only totally inclusive Conductive Education Centre in New Zealand that provides conductive programmes to children from 6 month old babies through all the children ages up to and including adults. A remarkable milestone in our history.

Our two Conductors continue to weave their magic with the children – thank you Judit and Gyorgyi. Both Conductors are going to enjoy their well-earned break. Judit will be holidaying within New Zealand. Gyorgyi is flying home to Hungary to give her mum a surprise.

Our Parent Fundraising Group have created some great money-making ventures for us – who could forget the Fashion Extravaganza (and its going to be held again in 2011) – plus our sausage sizzles, scratchie boards, chocolates, etc. Thank you Lisa, Jo, Miriam and all your helpers for a great year.

Thank you to our hard-working voluntary Trustees. We have six, three

being parents and three business people (one who is also a grandparent of a CE child). Trustees meet on a monthly basis and usually have a full agenda.

To our Conductive Education Southland Parents, thank you for believing in us and for bringing your child to our Conductive Education Centre. Without you or your children we would not require a Centre.

Thank you also to our many community funders and supporters - without your financial support we could not continue.

Christmas is upon us. Another year just around the corner. Rest up during the summer break. Enjoy quality family time. Eat, drink, be merry, exchange gifts, spare a thought for those less fortunate than ourselves especially the families who lost loved ones in the Pike River mining disaster, and also give a thought to what the true meaning of Christmas is about.

Stay safe, happy and healthy. I look forward to seeing you all back at our cutting-edge Conductive Education Southland centre of excellence in 2011.

Merry Christmas and a Happy New year - Kevin - Manager

Message from the Chairman

Hi Everyone,

This is my opportunity to wish all Our Families a very Happy Christmas and a safe and Happy New Year.

It has been another busy year with a number of new children attending Our Centre and we also ran our very first "Satellite" program in Dunedin for a number of families from that area. By all accounts this was very successful, and we plan to do another one in the not too distant future.

Christmas is a time for families and giving, so I thought that I would say "thank you" on behalf of Our Families to a number of people who have given up their time freely to help "Our Centre":

- A big thank you to all our Trustees for freely giving their time and

expertise throughout the year.

- Thank you to the fundraising Committee for organising some fabulous (and profitable) events throughout the year.
- Thank you to our Manager, Kevin who always gives 110% and works far more hours than he is ever paid for!
- Thank you to our 2 Conductors Judit and Gyorgi for going the extra mile with our children and for loving them as much as we do.

Finally to wish all our talented kids a really great holiday and the chance to spend some "quality time" with the family. You have worked hard all year and deserve the very best Christmas!

John Rhodes - Chairman

Conductors words

We had a fantastic year in 2010 as all the children learnt something and that is why we are all here.

Currently our youngest child is 1 year old, the oldest is 16 and we have a young adult from Dunedin who is 28 years old and started to attend our classes weekly. The number of our attendees is always changing as children are graduating and new ones coming but they were always around 30 in this year which kept us busy.

This year was really good with spreading the word about Conductive Education. Our Trustees and Our Manager and we all worked hard to make this centre successful and we think that is still the best centre in New Zealand. We have ups and downs and harder and easier days but we still think that the children that are here just fantastic with their own

personality. Our Centre is still trying to help anyone whose problems are related to neurological origins. We have got children with Developmental Delays, Cerebral Palsy, Muscular problems, Dyspraxia, Microcephaly, Autism, Down Syndrome and a Chromosomal deletion.

We have families coming from Invercargill, Gore, South Otago, and now 3 families from Dunedin in every week to learn about Conductive Education, we are really hoping that the number of our attendees will increase as we have always place for everyone who needs help.

And now we wish you a wonderful Christmas, spend lots of time with your family in peace. And as the Hungarians always do, we wish you good health for the next year and lots of energy with the work what you do.

Hopefully see you all in the next year, Love, Conductors Judit and Gyorgyi

Thank you...

COG's Southland for your very generous \$7,475.00 (GST inclusive) Grant.

Manager Ann and Trustees of our ILT Foundation (Invercargill Licensing Trust) for your very generous \$10,000 (GST exempt) Grant.

NZ Lottery Grants Boards for your very generous \$31,625.00 (GST inclusive) Grant.

These grants will assist with our annual operating costs which includes covering a portion of our annual salaries.

Conductive Education Southland appreciates our partnership we have with these organisations.



Christmas Party

What a fantastic Christmas Party Conductive Education Southland held on Sunday 12 December 2010. Over 80 people comprising CE Southland children, siblings, parents, grandparents, Trustees and Staff, were present.

Everyone was well entertained with fantastic music and singing by Sue and Murray (grandparents of Grace), our Puppet Show (also by Sue and Murray), our Nativity Play so fantastically performed by our very special CE children, bouncy castles, donkey rides, and a surprise visit by Santa. Every child and sibling received a special gift from Santa

There were lollies, drinks, balloons, sausage sizzle, all types of food, face-painting, costumes, entertainment etc. And a photographer to capture the many delightful moment (nearly 900 photo's taken as well as a video of the day).

Thank you Conductors and children for rehearsing the nativity play and for performing so very well for us all. To see our very special children all dressed up as shepherds, angels, etc., and for the nativity scene the Conductors and parents created, truly made one of the highlights of our 2010 children's Christmas Party.

Thank you to everyone who assisted wrapping gifts, 'dressing up' our hall turning it into a Christmas theme with nativity enclave, bought along food, helped on the day in some many way. Your efforts were appreciated and made our 2010 Christmas Party the biggest and best ever held. Thank you all.

Kevin - Manager



Thank you to our supporters

Since our last newsletter (October 2010) we have recieved generous funding assistance from:

- NZ Lottery Grants Board \$31,625
- COG's (Community Organisation Grants Scheme) \$7,475
- ILT Foundation \$10,000
- Oteramika APW \$150
- Woodlands RWNZ \$100
- Otago Community Trust \$1,000
- Ian Sherborne's Lake Taupo Cycle Ride \$3,200



Thank you everyone for your support. Please do continue to make us a charity of choice you prefer to support. The special needs children attending our Conductive Education are making progress from the services we provide, so we all THANK YOU.

End of Term 4 and start of Term 1

**Term Four 2010 will end on Friday 17 December 2010.
Term One 2011 will commence on Monday 31 January 2011.**

Calendars

Our 2011 calendars look absolutely fantastic. Our Conductors have throughout year 2010, captured many special moments and milestones of our children and these have been encapsulated into personal calendars of each child. Parents will be delighted with the professionalism and smart appearance of our calendars.

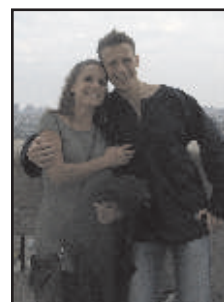
Like previous years, many parents requested additional copies of their child's calendar to give to grandparents, friends, etc. One hundred and ten calendars were printed yet we only have 30 children. This is truly a tribute to the calendar initiative Conductive Education Southland do each year. If parents require additional calendars, please let me know and we can have them for you at the start of Term 1, 2011.

Thank you to everyone involved with the calendar project, collectively you all did a marvellous job.

Kevin - Manager

Congratulations Arpi

Our Past Conductor Arpi has advised he has been working in Spain since last September. And his big news is – he has got engaged to be married to Nori. Congratulations Arpi and Nori from all at Conductive Education Southland.



Community Post

Thank you New Zealand Post Community Post 2010 for your donation of 200 pre-paid DLE envelopes. These envelopes will certainly save us considerable postage costs in the coming months.



Community Post

FREE POSTAGE FOR COMMUNITY GROUPS



Sausage Sizzle

Another great year (2010) virtually gone and we completed six fantastic sausage sizzles at Invercargill's The Warehouse.

Thank you to all parents, family, supporters for rocking up, cooking the snags, putting the fried onions, tomato and mustard sauces and snag on the bread, and selling. Thank you also to all the purchasers of our sausages. We couldn't have done these sausage sizzles without your support.

Thank you also to The Warehouse Invercargill for providing us with six Saturday's and the BBQ with gas for our use.

Each of these sausage sizzles earns us fantastic fundraising dollars (about \$450-\$500 clear profit from each sizzle) and also creates huge community awareness about Conductive Education.

For 2011, we have dates at this stage of: 19th February, 6th August and 10th December.



Ian Sherborne's Lake Taupo Cycle Challenge

Our intrepid cycle rider Ian Sherborne who works at the Tiwai Point Aluminium Smelter rode his backside off during the 2010 Contact Energy Lake Taupo Challenge on 27 November 2010.

Whilst Ian was doing this cycle ride to prove a point to his son, he also did it as an awareness opportunity and fundraiser for our Conductive Education Southland.

For our part we supplied Ian with a couple of T shirts emblazoned with our Conductive Education logo, some Conductive Education silicon wristlets, brochures, etc. Our parents and supporters are gathering in pledge donations all which comes to our Conductive Education Centre.

Ian and his huge supportive team at the Aluminium Smelter are also raising funds for us.

Ian told me after the ride that he was riding for the Conductive Education kids and that's what got him to the end. It was a real struggle at times. Not only was the ride of 160 kilometres (100 miles) was the roadway wasn't always flat, there are many hills and undulating terrain along the way.



Ian and Nigel presenting CE Southland Chairman with the cheque

The pledges are now rolling in from Ian's wonderful and epic effort – riding around Lake Taupo on 27 November 2010 – a distance of 160 kilometres and not all of it on flat terrain.

Ian and his son Nigel who also rode came to our Christmas Party and presented Conductive Education Southland with a cheque for \$3,126.00. Thank you Ian and Nigel for recognising our Conductive Education

DVD

Parents (and children) at our 2010 Christmas Party on 12 December 2010 will have seen the movie of our children that we screened. Many parents have requested copies of this movie

What we are going to do, is go one step further by putting this movie and the video footage we took of the Nativity Play onto CD's. These CD's

Southland Charitable Trust as a very worthy charity of choice for you to support. We certainly appreciate what you did for us, especially



punishing your body and for riding the full distance.

Special thanks goes out to Marita Sutherland a grandparent of one of our ex-CE Southland children who raise in excess of \$1,200. Marita thank you for getting involved with this activity and for raising such a huge amount for us. You are a true gem. Thank you.

The funds raised continues to climb as Conductive Education Southland parents start bringing in their pledges.

Thank you everyone who supported this fundraising activity and a huge thank you to Ian and Nigel for your fantastic endeavour.

Kevin - Manager



will cost \$5 each and will be available when you start Term One 2011.

Please your order now by emailing Kevin –

conductive.ed.southland@xtra.co.nz – or phoning Our Centre 03 931 0111 or Kevin on his mobile 027 22 11 701.

If undelivered return to:
Conductive Education Southland - P O Box 126 - Invercargill

Thank you to our supporters - please support them

Eagles Eagles & Redpath
Barristers & Solicitors

Virginia Wilson B.A. LL.B

1st Floor 80 Kelvin Street - PO Box 1445 Invercargill
Phone 03 218 2182 - Fax 03 218 2185

Invercargill Ph 218 2182 - Fax 03 218 2185 Cnr kelvin & yarrow streets office@eagles-eagles.co.nz	Bluff Tuesday afternoons Ph 03 212 8338	Te Anau 2nd & 4th Tuesday each month Ph 03 249 7232
---	--	---

Factory outlet shop
21 Leven st
Invercargill (next to spotlight)

Knight
KNIGHT OF NEW ZEALAND

"PROUD TO SUPPORT CONDUCTIVE
EDUCATION IN SOUTHLAND & OTAGO"

Greg & Lynley Ramsay
Awatea, Owaka
Telephone & Facsimile
03 415 8437
Mobile
0274 350 304
Email
glawatea@xtra.co.nz

SOUTH OTAGO SCANNING
Ultra-sound Livestock Pregnancy Scanning

Holistic Health

Debbie, Kim and Prue

29 Kelvin St, Invercargill
Phone 03 218 6120
Fax 03 218 9160
holistic.health@xtra.co.nz

Harcourts
W. THOMPSON & CO LTD WHNZ
A MEMBER OF THE HARCOURTS GROUP

Dave Bartley
Sales Consultant

p 03 214 4080
m 027 539 6397
e davebartley@harcourtsinv.co.nz
after hours 03 217 1145 facsimile 03 214 1155
182 Dee Street, PO Box 138, DX YA90044
Invercargill, New Zealand
www.harcourts.co.nz

Steve Rhodes
FEATURE CARS

tele: 03.215.8440 anytime
mob: 027 453 7020
email: steve@featurecars.co.nz
web: www.featurecars.co.nz

My Personal Guarantee of Quality & Service

NZAS
New Zealand Aluminium Smelters

Proudly supporting
Conductive Education Southland

**HAVE YOU CONSIDERED
JOINING THE NEW ZEALAND
CEREBRAL PALSY SOCIETY?**

If It's Metal We Make It

NEW ZEALAND CROWN SHEETMETAL
32 Spey Street, Invercargill
03 214 4817 info@crownsheetmetal.co.nz
www.crownsheetmetal.co.nz

Thank you to our funders

ILT
Your City. Your Trust.

Community Trust of Southland
Te Pou Arataki Pounamu o Murihiku

LIONS

MINISTRY OF HEALTH
MANATU HAUORA

COGS
Community Organisation Grants Scheme

89.2 MORE FM
SOUTHLAND

Rural Women
NEW ZEALAND

SOUTHERN VICTORIAN CHARITABLE TRUST INC

NZAS

FREEMASONS
New Zealand

LION FOUNDATION

RESPONSIBLY FUNDING COMMUNITY WELL-BEING

Pub Charity

OTAGO Community Trust

RPL